

# OXMOOR<sup>®</sup>

C O R P O R A T I O N

A Limited Liability Company

## **TWEEQ<sup>™</sup>-MAC**

### **EQUALIZER CONTROL SOFTWARE**



Installation  
& Operation  
Manual

# TABLE OF CONTENTS

<b>TWEEQ INTRODUCTION .....</b>	<b>1</b>
<b>TWEEQ OPENING SCREEN .....</b>	<b>2</b>
<b>TWEEQ HELP SCREEN .....</b>	<b>3</b>
<b>TWEEQ MENUS .....</b>	<b>4</b>
<b>TWEEQ MENUS (CONTINUED) .....</b>	<b>5</b>
<b>TWEEQ MENUS (CONTINUED) .....</b>	<b>6</b>
<b>OXMOOR FACTORY SERVICE .....</b>	<b>7</b>
<b>OXMOOR TWO YEAR LIMITED WARRANTY .....</b>	<b>7</b>
<b>CONTACT OXMOOR .....</b>	<b>7</b>

# TWEEQ INTRODUCTION

## WHAT IS TWEEQ™?

TWEEQ is a software package that offers a fast and effective way of equalizing sound systems using Oxmoor's DEQ-I and DEQ-II High Resolution Programmable Equalizers. While presenting a visual control interface with a similar appearance and operation to the DEQ-II's front panel controls, Oxmoor's TWEEQ software offers enhanced resolution for easy adjustment. A significant advantage of using TWEEQ is that multiple curves may be stored on disk.

The accessory TWEEQ software package includes software, a serial protocol conversion box that makes your computer PA-422 compatible, and a cable to interconnect your computer and the conversion box.

## MINIMUM REQUIREMENTS

Before you begin to work with TWEEQ, we recommend that you become familiar with your current hardware and software. We strongly recommend that you examine Oxmoor's DEQ-I and DEQ-II

"Installation & Operation Manual" if you have any questions about DEQ Names, Presets, Preset Titles, etc.

Minimum hardware:	Macintosh Plus or later
Minimum System software:	6.0.4. or later
Minimum memory:	One megabyte (1 MB)

## TWEEQ INSTALLATION

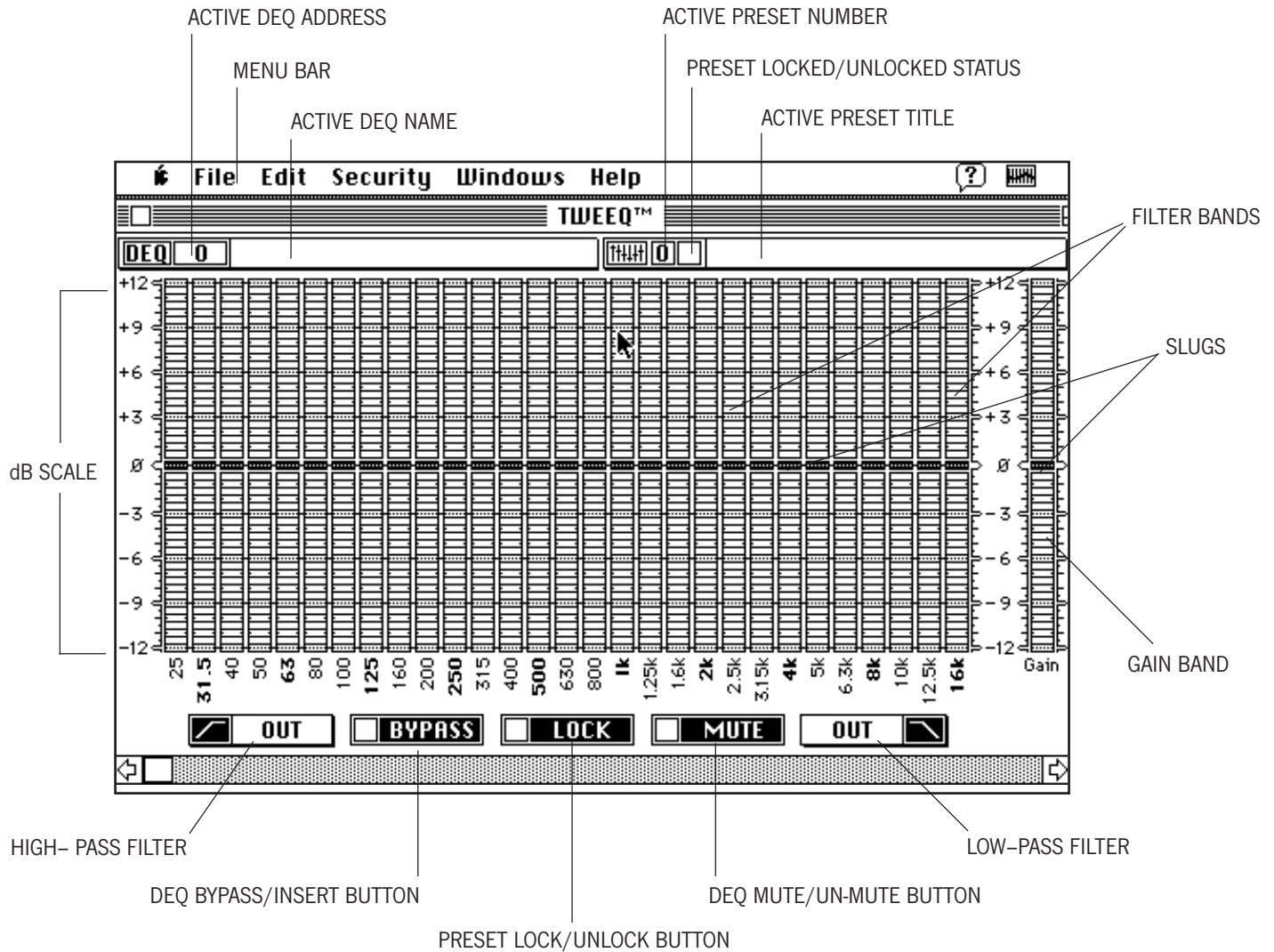
After starting your Macintosh from a start up disk, insert the TWEEQ disk. If you are working with a hard disk, drag the TWEEQ icon onto your hard disk. We recommend that you generate a new Folder and name it TWEEQ. Then place the TWEEQ program into this folder.

After you have installed your TWEEQ program, double click on the TWEEQ icon and refer to the following pages for a description of operations.

*For more information on any Oxmoor product, please contact the Oxmoor Sales Department. Or download complete product brochures and manuals at our website: [www.oxmoor.com](http://www.oxmoor.com).*

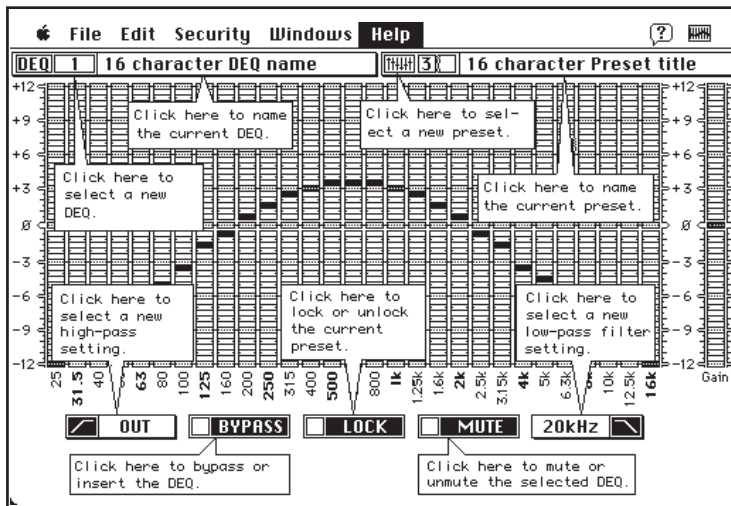
**OXMOOR®**

# TWEEQ OPENING SCREEN



- MENU BAR** ..... Contains the pull down menu items available with TWEEQ
- ACTIVE DEQ NAME** ..... Displays the name of the active equalizer if a name has been given
- ACTIVE DEQ ADDRESS** ..... Displays the PA-422 address of the selected DEQ
- ACTIVE PRESET NUMBER** ..... Displays the number of the active preset
- PRESET LOCKED/UNLOCKED STATUS** ..... Displays a lock icon when the selected Preset is locked
- ACTIVE PRESET TITLE** ..... Displays the title of the Preset if a title has been given
- HI-PASS FILTER** ..... Displays the cut-off frequency of the Hi-Pass filter
- DEQ BYPASS/INSERT BUTTON** ..... Bypasses and inserts the active DEQ
- PRESET LOCK/UNLOCK BUTTON** ..... Locks and unlocks the active Preset
- DEQ MUTE/UN-MUTE BUTTON** ..... Mutes and un-mutes the active DEQ
- LOW-PASS FILTER** ..... Displays the cut-off frequency of the Low-Pass filter
- GAIN BAND** ..... The area that represents the output gain control
- SLUGS** ..... Used to adjust filters and gain control
- FILTER BANDS** ..... The areas that represents the 1/3 octave filters

# TWEEQ HELP SCREEN



## GETTING STARTED WITH TWEEQ

When you open TWEEQ by double clicking on the TWEEQ icon, you should see the screen as described on page 2 of this manual. First, try to move a "slug." Move the computer mouse so the cursor is inside one of the filter bands, then press the mouse button and watch the slug move to the cursor position. While you continue to hold down the mouse button drag the cursor up and down the filter band. You will see the slug follow along with the cursor.

Release the mouse button. Now move the cursor to the Gain Band and press the mouse button. You should see the slug move to the cursor position. Now drag the cursor up and down the Gain Band and watch the slug follow.

Once you have captured a slug, and you continue to press the mouse button, you can move the cursor anywhere within the Filter Bands or Gain Band areas without losing control of the captured slug. This allows you to capture a slug and then move the cursor to the dB scale located on each side of the Filter Bands for precise positioning of the slug.

To set the High-Pass or Low-Pass filters, position the cursor inside the High-Pass or Low-Pass rectangular box, then press the mouse button. A menu box will open displaying other filter choices. While you continue to hold down the mouse button drag the cursor to the frequency setting desired and release the mouse button. Now you should see the frequency selected appear in the rectangle box.

To Bypass/Insert, Lock/Unlock, Mute/Un-Mute, position the cursor inside the desired box and press

## PRESET #

By using the numeric keys (1-8) on the keyboard the user may also select new Presets.

## MUTE

The spacebar on the keyboard will also Mute or Un-mute the active DEQ.

## BYPASS

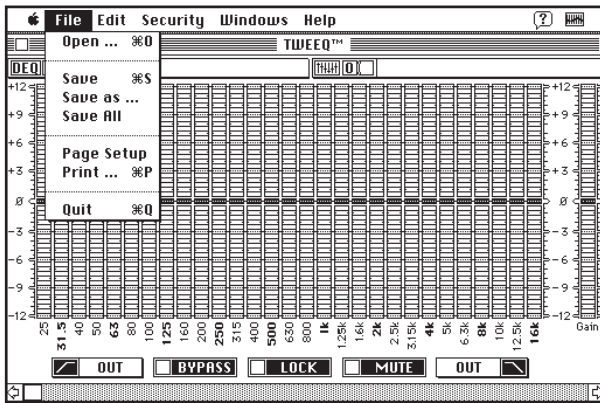
The 0 key on the keyboard will also Bypass or Insert the active DEQ.

the mouse button. You will see an "X" appear or disappear (depending on its original status) at the left side of the box. Press the mouse button again to return it to its original state.

To select a DEQ address, position the cursor inside the area where the DEQ address is displayed. **NOTE: If no DEQs are connected, you will get an error message when you select a new address.** Press the mouse button, a menu will open listing the DEQ addresses. While you continue to press the button on the mouse, move the cursor to the desired number and release the mouse button. Now you should see the selected number in the box. To name an active DEQ, position the cursor inside the Active DEQ Name area and press the mouse button. A dialog box will open and you may use the keyboard to type the desired DEQ name. When you are finished typing, move the cursor to the OK box and press the mouse button.

To select a Preset number, position the cursor inside the area where the Preset number is displayed. Press the mouse button, a menu will open listing the Preset numbers available. While you continue to press the button on the mouse, move the cursor to the desired number and release the mouse button. Now you should see the selected number in the box. To title an active Preset, position the cursor inside the Active Preset Title area and press the mouse button. A dialog box will open and you may use the keyboard to type the desired Preset Title. When you are finished typing, move the cursor to the OK box and press the mouse button.

# TWEEQ MENUS



## THE FILE MENU

**OPEN .....** Opens a dialog box and displays the names of any curves stored on the active disk drive. By clicking on a name in the dialog box and then clicking OK, the curve will be loaded into the active Preset.

**SAVE .....** Saves the active Preset to the disk drive

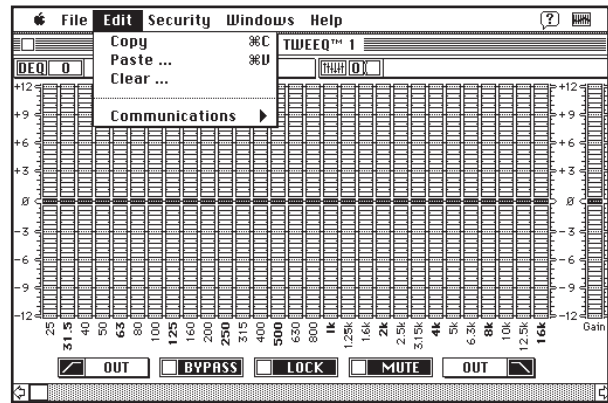
**SAVE AS ....** Saves the current Preset to disk after allowing the user to change the file name and to specify which disk drive to use

**SAVE ALL...** Saves all eight Presets to the disk drive in sequence

**PAGE SETUP .....** Presents a dialog box of options for printing with the currently chosen printer

**PRINT .....** Prints the active Preset

**QUIT .....** Closes TWEEQ™ and returns to the Finder



## THE EDIT MENU

**COPY .....** Places a copy of the selected Preset into a buffer for subsequent pasting

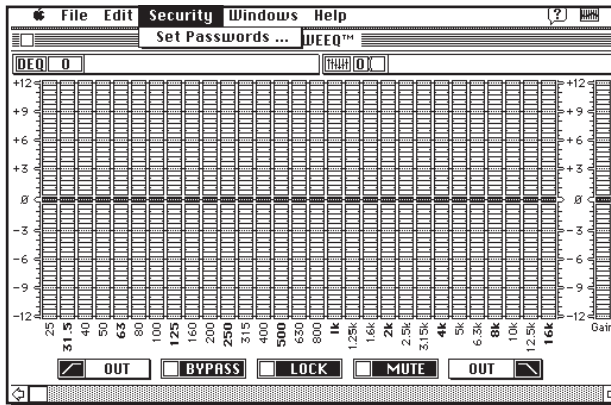
**PASTE .....** Puts a copy of the Preset located in the copy buffer into the active Preset. The information remains in the copy buffer until you quit TWEEQ or something else is copied into the buffer.

**CLEAR .....** Sets the Filters and the gain of the active Preset to the default values (flat for the filters, 0 dB for the gain, out for the high and low pass filters)

## COMMUNICATIONS

Allows user to select the modem port or the printer port for TWEEQ to DEQ communications

## TWEEQ MENUS (CONTINUED)



### THE SECURITY MENU

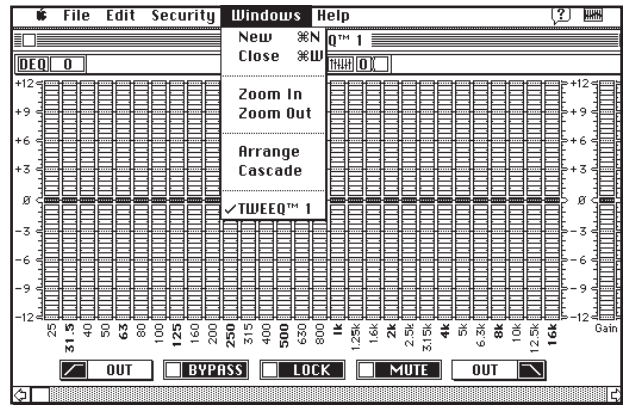
#### SET

**PASSWORDS...** Allows the user to set a two-level Password Security. The password system consists of two passwords, referred to as the System level and User level passwords. The System Administrator who wishes to use passwords has the ability to prevent access to some or all of the equalizer's functions through this Password Security System. Refer to the DEQ-I and DEQ-II Installation & Operation Manual for a detailed description of this feature.

A user who logs on with the System password has access to all of the equalizer's functions.

Someone logged on with the User password has access to most, but not all, of the equalizer's functions. The User level user may not:

1. LOCK or UNLOCK Presets
2. Set or edit Passwords
3. Name an equalizer



### THE WINDOWS MENU

**NEW .....** This function creates a new TWEEQ window and makes it active. The name of this new window will depend on the number of windows already active and will be added to the window list. The new window is initially not assigned to an equalizer. This fact is denoted by the zeroes in the DEQ and Preset select boxes.

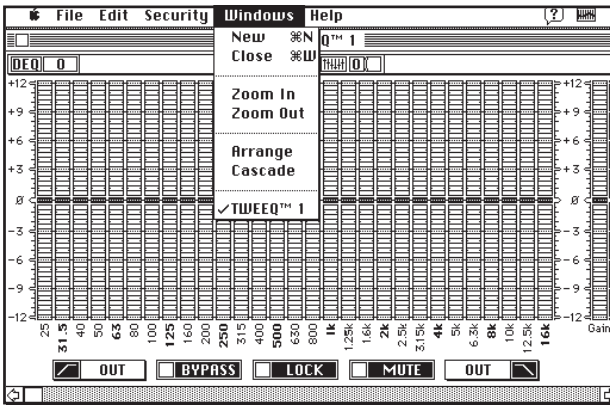
**CLOSE .....** The Close function is equivalent to the action of closing the active window by clicking its close box.

**ZOOM IN ...** Changes the size and location of the active window to the size and location last specified by the user. This has the same effect as clicking the mouse in the Zoom In box.

**ZOOM OUT..** Enlarges the view of the active window to full screen. This has the same effect as clicking the mouse in the Zoom Out box.

*(Windows Menu functions are continued on the next page.)*

# TWEEQ MENUS (CONTINUED)



## THE WINDOWS MENU - CONTINUED

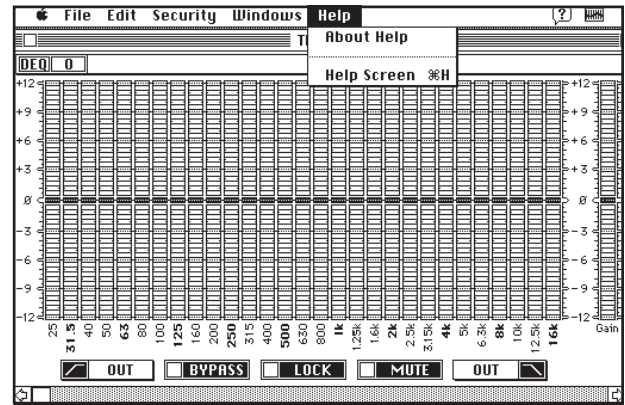
*(Windows Menu functions continued from the previous page.)*

**ARRANGE ..** Multiple windows on the screen are sized and arranged so you can see them all.

**CASCADE ..** Multiple windows on the screen are arranged diagonally across and down the screen. Each window has some part exposed so that you can click on to bring it to the front.

User can have multiple windows open at once. As each window is opened, it is listed in the "Windows" menu, along with a number. The number depends on the number of windows already active. The current active window is checked in the menu. The maximum number of open windows is 9.

**TWEEQ 1 ...** When you assign an active window to a DEQ address and Title a Preset, the name of the active window will change from TWEEQ™ (1 or 2, etc.) to display "DEQ (address)"- "Preset Title." This new name also appears under the "Windows" menu.



## THE HELP MENU

### ABOUT

**HELP .....** Describes the Help Screen item

### HELP

**SCREEN ....** Displays a picture illustrating how to access many of the TWEEQ software functions. *(See page 3 of this manual for more information on the TWEEQ Help Screen.)*

# OXMOOR FACTORY SERVICE

*For service information contact:*

**Oxmoor Product Service Department**  
**309 Cahaba Valley Parkway**  
**Birmingham, Alabama 35124**  
**E-mail: [info@oxmoor.com](mailto:info@oxmoor.com)**

**Telephone: (205) 982-8200**  
**Toll Free: 1 (800) 262-6898**  
**Fax: (205) 982-8250**  
**Internet: [www.oxmoor.com](http://www.oxmoor.com)**

Additional Installation & Operation Manuals are available from Oxmoor. Contact the Oxmoor Sales Department for pricing and other ordering information. Consult warranty statement for cautions concerning unauthorized service.

## OXMOOR TWO YEAR LIMITED WARRANTY

Oxmoor warrants that each Oxmoor electronic product shall be free from defects in workmanship and materials and will, at its option, repair or replace any part of the product without charge provided the product is delivered to Oxmoor within two years of date of original purchase from or delivery by an authorized Oxmoor dealer. Excluded from this warranty are finish and appearance items and malfunction resulting from abuse, from use that is not in accordance with instructions, or operation under other than specified conditions. Also excluded are incidental or consequential damages except where precluded by applicable law. This warranty provides the customer with specific legal rights; there may also be other rights which vary from state to state.

Repair by other than Oxmoor Factory Service Department or its authorized service agency, unauthorized modification, or the removal or defacing of the serial number will void this warranty.

Products returned for factory warranty service must be prepaid and packaged in such a way as to insure safe transit and must be accompanied by a sales slip or other valid proof of purchase date.

PRIOR AUTHORIZATION FROM OXMOOR IS REQUIRED FOR RETURN. Contact Oxmoor for a Return Authorization (R.A.) Number and shipping information before returning product for service.



Oxmoor Corporation, LLC, 309 Cahaba Valley Parkway, Birmingham, AL 35124 USA  
Toll Free 1 (800) 262-6898 Telephone (205) 982-8200 Fax (205) 982-8250 E-mail [info@oxmoor.com](mailto:info@oxmoor.com)

For 24-hour access to product specs and information visit Oxmoor's complete product line on the internet at [www.oxmoor.com](http://www.oxmoor.com).

Oxmoor is a registered trademark of Oxmoor Corporation, LLC.

*Specifications and design are subject to change without notice.*